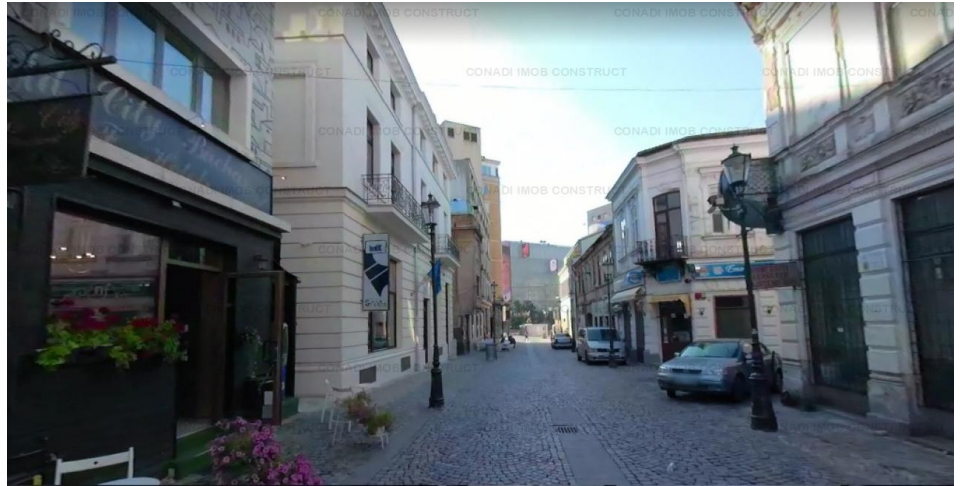


De inchiriat - Spatiu comercial

Bucuresti, Centrul Vechi

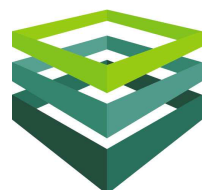
3.200 Eur/luna + TVA



Spatiu comercial 7 camere, 181 mp, partial compartimentat, 1950, etaj Parter/1

ID: 1958369

Pentru vizionare si detalii, contactati:
Sebastian Stanescu
0213104515
sebastian.stanescu@conadi.ro



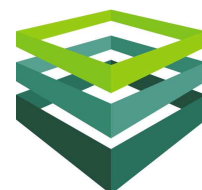
www.conadi.ro

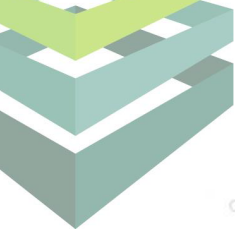


Caracteristici

Nr. camere:	7	Compartimentare:	partial compartimentat
Suprafata utila (mp):	181 mp	Etaj:	Parter / 1
Suprafata construita (mp):	217 mp	Nr. bai:	2
An constructie:	1950	Nr. garaje:	2
Stadiu constructie:	finisat	Inaltime spatiu (m):	3 m
Structura:	caramida	Spatiu Vitrine (m):	16 m

Localizare: Bucuresti, Centrul Vechi





CONADI IMOB CONSTRUCT

CONADI IMOB CONSTRUCT

CONADI IMOB CONSTRU

TOTAL SUPRAFATA= ~ 181.29MP

CONADI IMOB CONSTRUCT

CONADI IMOB CONSTRUCT

CONADI IMOB CONSTRUCT

CONADI IMOB CONSTRUCT

CONADI IMOB CONSTRU

CONADI IMOB CONSTRUCT

CONADI IMOB CONSTRUCT

CONADI IMOB CONSTRUCT

CONADI IMOB CONSTRUCT

CONADI IMOB CONSTRU

CONADI IMOB CONSTRUCT

CONADI IMOB CONSTRUCT

CONADI IMOB CONSTRUCT

CONADI IMOB CONSTRUCT

CONADI IMOB CONSTRU

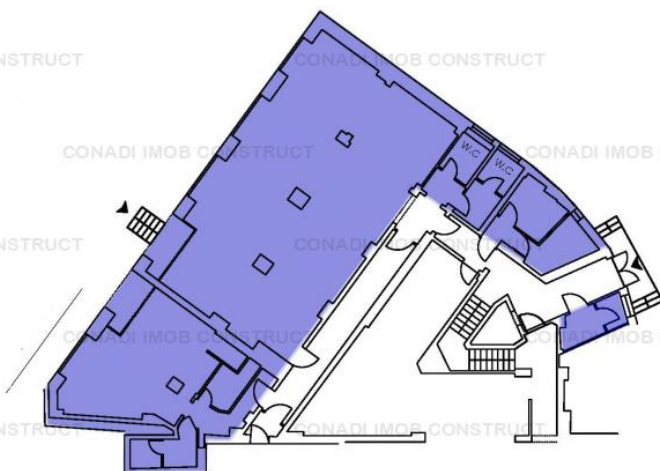
CONADI IMOB CONSTRUCT

CONADI IMOB CONSTRUCT

CONADI IMOB CONSTRUCT

CONADI IMOB CONSTRUCT

CONADI IMOB CONSTRU



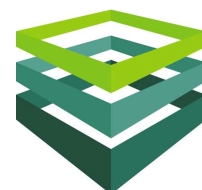
CONADI IMOB CONSTRUCT

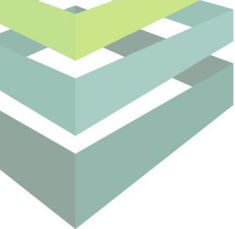
CONADI IMOB CONSTRUCT

CONADI IMOB CONSTRUCT

CONADI IMOB CONSTRUCT

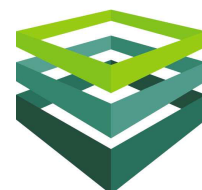
CONADI IMOB CONSTRU





Descriere

Spatiul este la parterul unui imobil vechi. Intrarea se face direct din strada. Artera pe care se afla si spatiul propus spre inchiriere au o buna vizibilitate.





Utilitati

General:	curent electric, apa, telefon, gaz, cablu TV, canalizare
Incalzire:	centrala proprie, calorifere
Climatizare:	aer conditionat
Internet:	fibra optica

Finisaje

Stare Interior:	buna
Usi interioare:	celulare
Usa Intra-re:	metal
Ferestre:	pvc
Pardoseala:	gresie
Pereti:	vopsea lavabila, faianta

Dotari

Alte spatii:	wc serviciu, spatiu depozitare
Mobilat:	nemobilat
Contorizare:	gaze, apa

Vecinatati

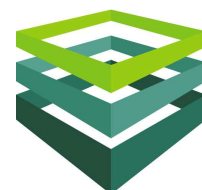
Vecinatati:	transport public, metrou, farmacie, mall, hypermarket
-------------	---

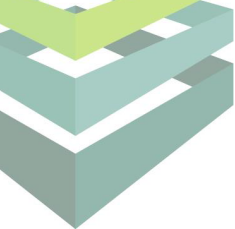
Statut juridic

Statut juridic:	cadastru, intabulare
-----------------	----------------------

Destinatie

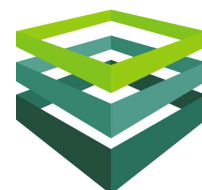
Recomandat pentru:	comercial, birouri, comercial - retail
--------------------	--

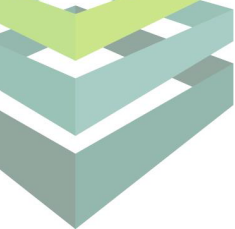




Spatiu comercial zona Centru Vechi - pasaj

Suprafata (mp):	181 mp
Inaltime:	3
Vitrine (mp):	48 mp
Lungime vitrine (ml):	16 ml
Disponibil:	Disponibil imediat
Suprafata divizibil minim (mp)	181 mp
Alte costuri:	Utilitati/Mentenanta
Pret mentenanta:	17.68 EUR / mp /luna + TVA
Descriere:	Spatiul este bine pozitionat in apropierea pasajului de pe Lipscani. Se preteaza la orice tip de activitate comerciala.



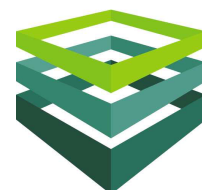


PREZENTARE COMPANIE CONADI

CONADI a fost infiintata in Bucuresti, in 1997, ca o companie privata romaneasca concentrata pe oferirea de servicii de consultanta in sectorul imobiliar.

In timp, compania s-a extins si si-a diversificat portofoliul de servicii furnizate, dezvoltand pe langa divizia de Brokeraj si Consultanta Imobiliara, pe cele de Management de Proiect, Evaluari Active, Administrare de Proprietati, Dezvoltare si Planificare, Investitii & Finantare si, nu in ultimul rand, Marketing si Comunicare, devenind astfel una dintre putinele companii care ofera **SERVICII IMOBILIARE INTEGRATE**.

Aceste servicii sunt furnizate prin intermediul unei echipe de profesionisti care stiu sa imbine spiritul antreprenorial cu o intelegere perfecta a dinamicii pietei imobiliare, toate transpunandu-se in final intr-un grad ridicat de satisfactie a clientului.





CONADI

EXCELLENCE IN REAL ESTATE

Tiriac Center, Soseaua Nordului nr. 24-26, etaj 4, Sector 1,
Bucuresti

Tel: + 40 21 310 45 15, Fax: + 40 21 310 18 67

www.conadi.ro